



Government of India
Ministry of Earth Sciences
India Meteorological Department



Press Release

Date: 22nd May, 2025

Time of Issue: 1430 hours IST

Subject: i) A low-pressure area lies over Eastcentral Arabian Sea off south Konkan-Goa coasts. It is likely to move nearly northwards and intensify further into a depression around evening of 23rd May, 2025
ii) Heavy to very heavy rainfall likely to continue over west coast (Gujarat, Konkan & Goa, Karnataka and Kerala) during next 6-7 days with possibility of extremely heavy over Konkan & Goa from 22nd to 24th and over Coastal Karnataka on 24th May, 2025.
iii) The conditions are likely to become favourable for Monsoon onset over Kerala during next 2-3 days.
iv) Heat wave to severe wave conditions likely over Rajasthan during 22nd-26th and heat wave conditions over Punjab, Haryana, Chandigarh & East Rajasthan on 22nd & 23rd May, 2025.

Advance of Southwest Monsoon: (Annexure I):

- ❖ The Northern Limit of Monsoon passes through 5°N/60°E, 6°N/65°E, 7°N/70°E, 7°N/75°E, 10°N/81°E, 13°N/84.5°E, 16°N/88°E, 19.5°N/91°E and 23°N/95°E.
- ❖ The conditions are likely to become favourable for Monsoon onset over Kerala during next 2-3 days.
- ❖ The conditions are also likely to become favourable for further advance of southwest Monsoon over some more parts of South Arabian Sea, remaining parts of Maldives and Comorin area; some parts of Lakshadweep area, Kerala, Karnataka, Tamil Nadu; some more parts South & Central Bay of Bengal, North Bay of Bengal and some parts of Northeastern states during the same period.

Realised weather during past 24 hours till 0830 hours IST of today, the 22nd May 2025 (Annexure II):

- ❖ **Thunderstorm accompanied with Squally/Gusty winds** with speed 60-100 kmph prevailed at isolated places over Haryana Chandigarh & Delhi, Punjab, Himachal Pradesh, Uttar Pradesh, Gangetic West Bengal, Bihar, Marathawada, Gujarat Region, Rajasthan, Chhattisgarh, West Madhya Pradesh; with speed 30-60 kmph prevailed at isolated places over south peninsular India, Konkan & Goa, Madhya Maharashtra, Saurashtra & Kutch, Uttarakhand, Sub-Himalayan West Bengal & Sikkim, Odisha, Jharkhand.
- ❖ **Heavy to very heavy rainfall** at isolated places over Goa, Sub-Himalayan West Bengal & Sikkim, Coastal Karnataka, Telangana; **Heavy rainfall** at isolated places over Madhya Maharashtra, Marathawada, Coastal Andhra Pradesh, North Interior Karnataka, East Uttar Pradesh, Gangetic West Bengal, Bihar, East Madhya Pradesh, Vidarbha, Assam, Tripura and Odisha.
- ❖ **Hailstorm** observed at isolated places over Kashmir, Himachal Pradesh, Uttarakhand, Punjab, Haryana Chandigarh, Delhi, West Madhya Pradesh,
- ❖ **Heat wave at a few places with severe heat wave conditions** prevailed in isolated pockets of Rajasthan; **Heat wave to severe heat wave conditions** prevailed in isolated pockets of Punjab, Haryana; **Heat wave conditions** in isolated pockets of Jammu, East Madhya Pradesh and South East Uttar Pradesh.
- ❖ **Warm night to severe warm night conditions** prevailed in isolated pockets of West Rajasthan; **Warm night conditions** in isolated pockets of Haryana.

For more details of realised weather, kindly refer [Annexure II](#),

Detailed observations of Maximum Temperature during past 24 hours till 0830 hours IST of today are appended in [Annexure III](#).

i. Weather Systems, Forecast and Warnings (refer to Annexure IV & V):

- ❖ A low-pressure area lies over Eastcentral Arabian Sea off south Konkan-Goa. It is likely to move nearly northwards and intensify further into a depression during next 36 hours. There is also possibility of its further intensification thereafter.
- ❖ A trough runs from the cyclonic circulation associated with the low-pressure area to north Telangana in lower & middle tropospheric levels.
- ❖ An upper air cyclonic circulation lies over Punjab and another over northeast Madhya Pradesh adjoining southeast Uttar Pradesh in lower tropospheric levels.
- ❖ A trough runs from above cyclonic circulation over Punjab & neighbourhood to central Madhya Pradesh in lower tropospheric levels.
- ❖ An upper air cyclonic circulation lies over northeast Assam in lower tropospheric levels.

Under the influence of these systems, the following weather is likely:

South peninsular India:

- ✓ **Fairly widespread to widespread** light/moderate rainfall accompanied with **thunderstorm, lightning & gusty winds speed reaching 40-50 kmph with isolated heavy to very heavy rainfall** likely over Kerala, Karnataka during 22nd-28th May.
- ✓ **Isolated Extremely heavy rainfall** very likely over Coastal Karnataka on 24th May.
- ✓ **Scattered to fairly widespread** light/moderate rainfall accompanied with **thunderstorm, lightning & gusty winds speed reaching 30-40 kmph** likely over Tamil Nadu, Puducherry & Karaikal, Coastal Andhra Pradesh & Yanam, Rayalaseema and Telangana during next 5 days.
- ✓ **Isolated heavy rainfall** likely over Tamilnadu Puducherry & Karaikal during 22nd-26th; Coastal Andhra Pradesh & Yanam on 22nd, 26th & 27th with isolated very heavy rainfall over Tamilnadu Puducherry & Karaikal and Telangana on 22nd May.
- ✓ **Thundersquall wind speed reaching 50-60 kmph gusting to 70 kmph** likely over Coastal Andhra Pradesh & Yanam, Rayalaseema on 22nd & 26th May.

West India:

- ✓ **Fairly widespread to widespread** light/moderate rainfall accompanied with **thunderstorm, lightning & gusty winds speed reaching 40-50 kmph** likely over Konkan & Goa, Madhya Maharashtra, Marathawada during 22nd-28th and **Scattered to Fairly widespread** rainfall over Gujarat State during 22nd -25th May with **Thundersquall wind speed reaching 50-60 kmph gusting to 70 kmph** likely over Konkan & Goa, Madhya Maharashtra, Marathawada on 22nd & 23rd and over Gujarat state during 25th-28th May.
- ✓ **Isolated Extremely heavy rainfall** very likely over Konkan & Goa during 22nd-24th and Madhya Maharashtra on 24th May.
- ✓ **Isolated heavy to very heavy rainfall** very likely over Konkan & Goa, Madhya Maharashtra during 22nd-28th, Marathawada on 22nd and isolated **heavy rainfall** over Gujarat State during 22nd -28th and Marathawada on 23rd May.

Northeast India:

- ✓ **Fairly widespread to widespread** light/moderate rainfall accompanied with **thunderstorm, lightning & gusty winds speed reaching 40-50 kmph** likely over Northeast India during next 7 days with **Isolated heavy rainfall** over Assam & Meghalaya during 22nd -27th; Nagaland, Manipur, Mizoram & Tripura during 22nd-25th; Arunachal Pradesh during 23rd-26th May.

East & Central India:

- ✓ **Scattered to fairly widespread** light/moderate rainfall accompanied with **thunderstorm, lightning & gusty winds speed reaching 40-50 kmph** likely over West Bengal & Sikkim, Madhya Pradesh, Vidarbha, Chhattisgarh, Odisha & Bihar during 22nd-26th May with **Thundersquall wind speed reaching 50-60 kmph gusting to 70 kmph** likely over East Madhya Pradesh during 22nd-25th; West Madhya Pradesh, Jharkhand, Chhattisgarh on 22nd & 23rd; Gangetic West Bengal on 22nd May.
- ✓ **Isolated heavy rainfall** likely over Jharkhand, Gangetic West Bengal, Chhattisgarh on 22nd & 23rd; Sub-Himalayan West Bengal & Sikkim on 22nd, Andaman & Nicobar Islands during 23rd-26th, Vidarbha on 24th, Odisha on 27th & 28th May, 2025.

Northwest India:

- ✓ **Scattered to fairly widespread** light/moderate rainfall accompanied with **thunderstorm, lightning & gusty winds speed reaching 40-50 kmph** likely over Uttarakhand, Himachal Pradesh, Uttar Pradesh and **isolated to scattered** light to moderate rainfall with **thunderstorm, lightning & gusty winds speed reaching 40-50 kmph** likely over Jammu-Kashmir-Ladakh-Gilgit-Baltistan-Muzaffarabad, Punjab, Haryana Chandigarh, Rajasthan during 22nd -28th May with **Thundersquall wind speed reaching 50-60 kmph gusting to 70 kmph** likely over Uttarakhand during 22nd-24th, West Rajasthan, Himachal Pradesh on 23rd & 24th ; East Rajasthan on 25th & 26th May.
- ✓ **Isolated hailstorm** over Himachal Pradesh on 23rd & 24th May.
- ✓ **Isolated heavy rainfall** also likely over Uttarakhand on 23th & 24th May.
- ✓ **Duststorm (40-50 kmph)** also very likely over West Rajasthan during 23rd-25th May.

Maximum Temperature Forecast:

- ❖ Fall by 2-4°C in maximum temperatures likely over Northwest India during next 24 hours, rise by 2-3°C over thereafter for subsequent 3 days and no significant change thereafter.
- ❖ Fall by 2-4°C in maximum temperatures likely over Central India during next 4 days and rise by 2-3°C over thereafter for subsequent 3 days
- ❖ No significant change in maximum temperatures likely over rest parts of the country.

Heat wave, Hot & Humid weather, Warm Night warnings:

- ❖ **Heat wave to severe heat wave conditions** in isolated pockets of West Rajasthan during 22nd-24th May.
- ❖ **Heat wave conditions** very likely in isolated pockets of Jammu, Punjab, Haryana Chandigarh, north Madhya Pradesh on 22nd & 23rd; East Rajasthan during 22nd-24th and West Rajasthan on 25th & 26th May.
- ❖ **Warm night conditions** very likely in few pockets of south Haryana, Punjab on 22nd & 23rd and West Rajasthan during 22nd-24th May.

FISHERMEN WARNINGS (Graphics in Annexure VI)

A) Eastcentral & southeast Arabian Sea and along & off Kerala, Karnataka, Konkan & Goa and adjoining Gujarat coasts and Lakshadweep area, Comorin area.

- ✓ Fishermen are advised not to venture into above mentioned areas during 22nd – 27th May.
- ✓ Total suspension of fishing operations over eastcentral and adjoining parts of southwest & northeast Arabian Sea during 24th- 26th May.

(B) Fishermen are advised not to venture along & off the Somalia coast and adjoining southwest Arabian Sea during 22nd-27th May, over southwest and adjoining parts of westcentral Arabian Sea on 25th & 26th May.

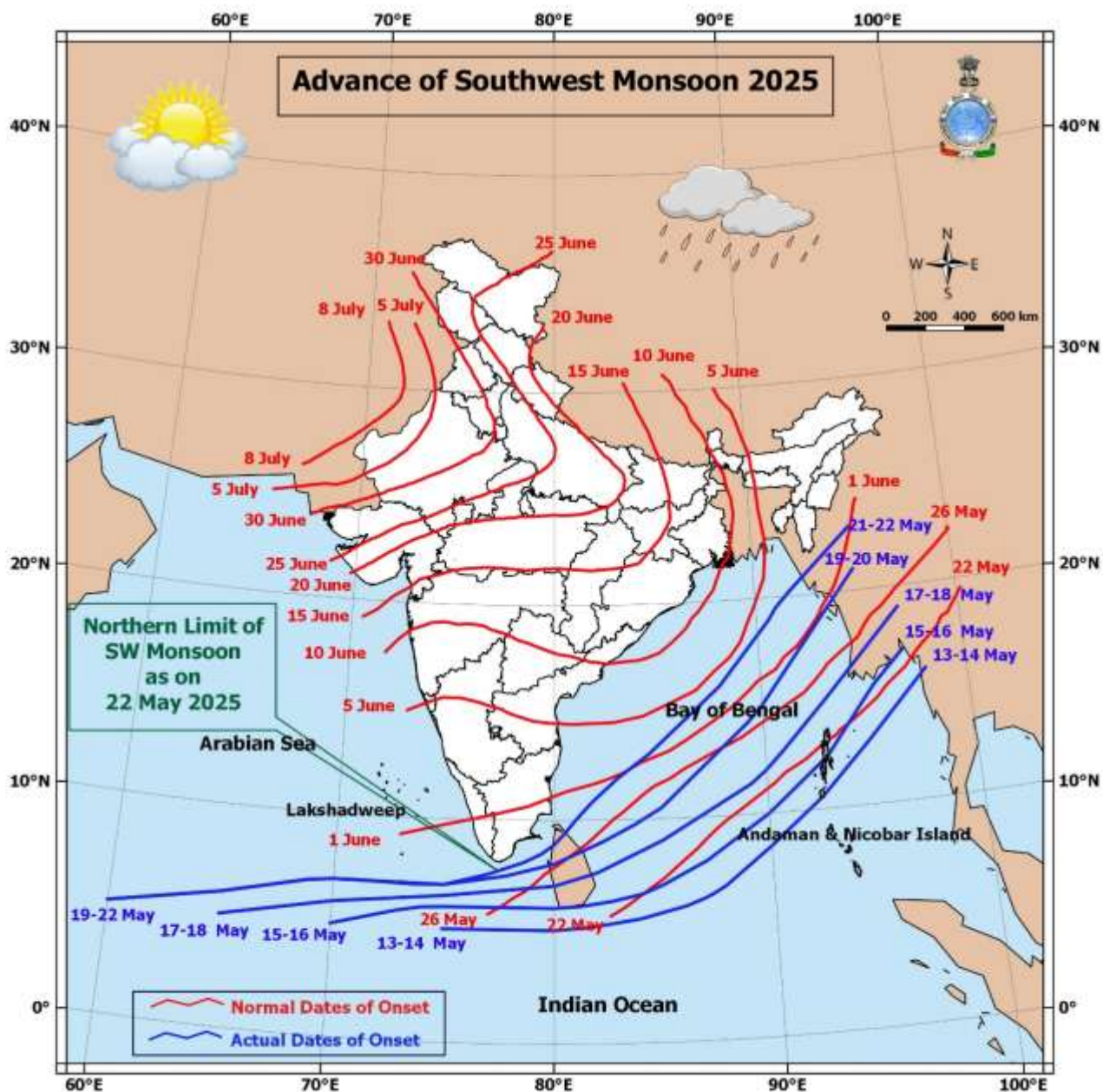
(C) Fishermen are advised not to venture along & off Andhra Pradesh coast & adjoining westcentral Bay of Bengal during 22nd-27th May and over Andaman Sea on 25th & 26th May

iv. Weather conditions and forecast over Delhi/NCR during 22nd May to 25th May, 2025 (Annexure VII)

For more details, kindly refer National Weather Bulletin:

https://mausam.imd.gov.in/responsive/all_india_forecast_bulletin.php

For District wise warnings refer: <https://mausam.imd.gov.in/responsive/districtWiseWarningGIS.php>



Significant weather reported during past 24 hours till 0830 hours IST of today:

- ❖ **Light/moderate Rainfall with thunderstorm & lightning** observed **at most places** over Lakshadweep, Coastal Karnataka, North Interior Karnataka, Coastal Andhra Pradesh & Yanam, Telangana, Kerala & Mahe, West Bengal & Sikkim, Uttarakhand, Vidarbha, Assam & Meghalaya, Nagaland, Manipur, Mizoram & Tripura; **at many places** over Konkan & Goa, Marathawada, Uttar Pradesh, Jharkhand, Chhattisgarh; **at a few places** over Rayalaseema, South Interior Karnataka, Saurashtra & Kutch, Madhya Maharashtra, Himachal Pradesh, Punjab, Haryana Chandigarh & Delhi, Andaman & Nicobar Islands, Odisha, Bihar, Madhya Pradesh, Arunachal Pradesh; **at isolated places** over Tamilnadu Puducherry & Karaikal, Gujarat Region, Jammu-Kashmir-Ladakh-Gilgit-Baltistan-Muzaffarabad, East Rajasthan

Rainfall recorded (in cm) reported during past 24 hours till 0830 hours IST of today:

- ❖ **Sub-Himalayan West Bengal & Sikkim:** Washabari Tea Estate (dist Jalpaiguri) 14, Kumargram Tea Estate (dist Alipurduar) 14, Kumargram (dist Alipurduar) 14, Anandpur Tea Estate (dist Jalpaiguri) 13, Gajoldoba (dist Jalpaiguri) 12, Majherdabri Tea Garden (dist Alipurduar) 12, Sevoke (dist Darjeeling) 11, Patkapara Tea Estate (dist Alipurduar) 11, Nh31 Bridge (dist Jalpaiguri) 9, Domohani (dist Jalpaiguri) 9, Bhatkawa Tea Estate (dist Jalpaiguri) 9, Alipurduar (pto) (dist Alipurduar) 9, Saraswatipur Tea Estate (dist Jalpaiguri) 9, Siliguri Pto (dist Darjeeling) 8, Newlands Tea Garden (dist Alipurduar) 8, Ghatia T.e. (dist Jalpaiguri) 8, Gairkata Tea Estate (dist Jalpaiguri) 8, Dengaujhar Tea Garden (dist Jalpaiguri) 8, Bhutanghat (dist Alipurduar) 8, Baradighi T.e. (dist Jalpaiguri) 8, Barobhisha (dist Alipurduar) 7, Dima Tea Estate (dist Alipurduar) 7, Chepan (dist Alipurduar) 7, Oodlabari Tea Estate (dist Jalpaiguri) 7,
- ❖ **Konkan & Goa:** Dabolim N.a.s.- Navy (dist South Goa) 14, Margao (dist South Goa) 14, Mormugao - Pmo Imd (dist South Goa) 12, Quepem (dist South Goa) 10, Mapusa (dist North Goa) 10, Kudal (dist Sindhudurg) 9, Mulde_ Agri (dist Sindhudurg) 9, Panjim - Imd Obsy (dist North Goa) 9, Roha (dist Raigad) 9, Canacona (dist South Goa) 7, Sawantwadi (dist Sindhudurg) 7, Sanguem (dist South Goa) 7, Pernem (dist North Goa) 7
- ❖ **Madhya Maharashtra:** Nda Pune - Arg (dist Pune) 11, Satara - Imd Obsy (dist Satara) 9, Kasabedigraj_agri (dist Sangli) 6, Kokrud (dist Sangli) 5
- ❖ **Gangetic West Bengal:** Durgachack (dist East Midnapore) 10, Diamond Harbour (dist South 24 Parganas) 9, Canning (dist South 24 Parganas) 6
- ❖ **Assam:** Bahalpur (dist Dhubri) 8, Karimganj (dist Sribhumi) 8, Manash Nh Xing (dist Barpeta) 8, Aie Nh Xing (dist Bongaigaon) 7, B P Ghat (dist Sribhumi) 7, Dhubri_imd (dist Dhubri) 7, Hazo Arg (dist Kamrup (rural)) 7, Panbari (dist Chirang) 7,
- ❖ **Marathawada:** Ahmedpur (dist Latur) 7, Latur (dist Latur) 7, Pathri (dist Parbhani) 6
- ❖ **East Madhya Pradesh:** Panna-aws (dist Panna) 7,
- ❖ **Coastal Andhra Pradesh & Yanam:** Amaravati (dist Guntur) 9, Podili (dist Prakasam) 7,
- ❖ **Tripura:** Kailashahar Aero (dist Unakoti) 8,
- ❖ **East Uttar Pradesh:** Mukhlispur (dist Gorakhpur) 8, Gorakhpur (dist Gorakhpur) 7,
- ❖ **Odisha:** Tiring (dist Mayurbhanj) 7, Samakhunta (dist Mayurbhanj) 5,

Realised Gusty Winds (KMPH) during past 24hours ending at 0300 UTC of today i.e. 22.05.2025;

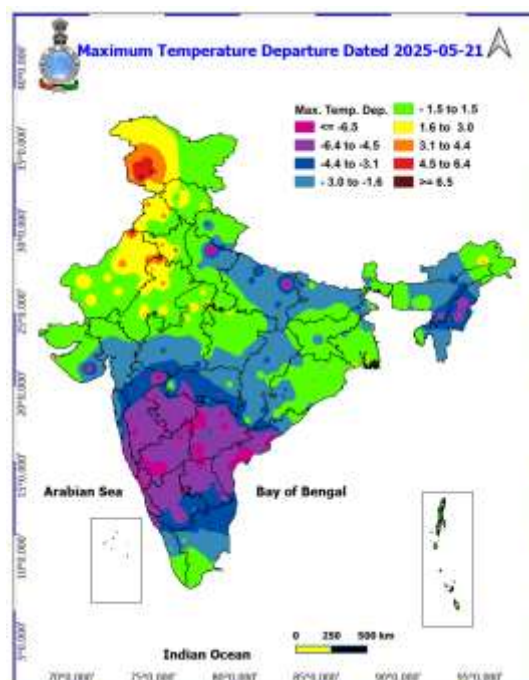
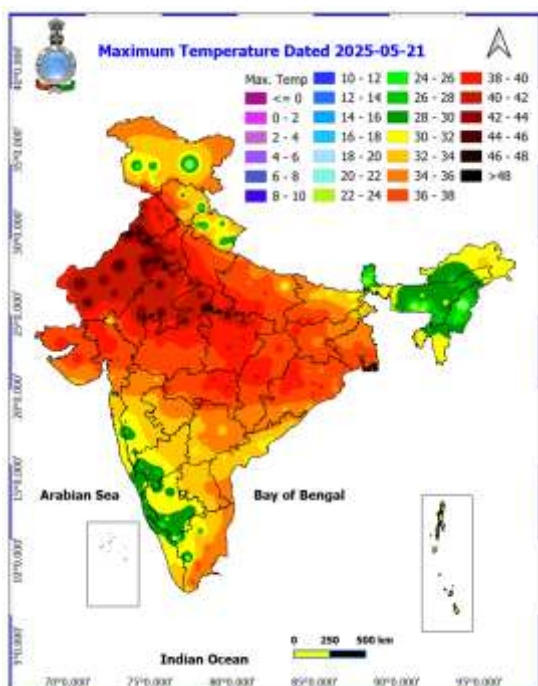
- ❖ **Haryana:** Kaithal-115, Karnal-93, Panopat-91, Jind-89, Sonipat-68, Bhiwani-65, Gurgaon_Kvk=65, Uchani(Krn)=61, Canal_Colony_Village_Ottu(Sirsa) = 50; Chandigarh = 59
- ❖ **Delhi:** Central Delhi-78, North west Delhi-65, North Delhi-63
- ❖ **Punjab:** Fatehgarh Sahib-81, Mohali-78, Ropar-76, Patiala-72, Moga-65, Hoshiyarpur-65
- ❖ **Himachal Pradesh:** Kufri – 80, Bilaspur-78, Shimla: 54, Seobagh: 43, Neri: 41, Dhaulakuan: 39, Sundernagar: 37, Narkanda: 35
- ❖ **West Uttar Pradesh:** Bulandshahar-87, Meerut-80, Shahjahanpur-80, Aligarh-76, Gaziabad-70, Moradabad-61, Farukhabad-74, Etawah-70, Hathras-68, Agra-59
- ❖ **East Uttar Pradesh:** Ayodhya-74, Raebareilly-65, Fatehpur-63, Lucknow-57,
- ❖ **Gangetic West Bengal:** Ramkrishna Mission College -74, Barrackpore -63, Kzi_Airport -61, Berhampore -51.86 Km/H, Diamond Harbour -55.56 Km/H, Kvk_Burdwan_Budbud -53.71 Km/H, Santiniketan-Bolpur_Kvk -44.45 Km/H, Kolkata Airport -44.45 Km/H,
- ❖ **West Rajasthan:** Sikar-74
- ❖ **Chhattisgarh:** Koriya – 72 Korba – 57
- ❖ **Bihar:** Gopalpur-70, Supaul-59
- ❖ **East Rajasthan:** Karauli-65, Pratapgarh-63, Alwar-57
- ❖ **West Madhya Pradesh:** Ujjain – 63 Shajapur – 57
- ❖ **Madhya Maharashtra:** Aurangabad-61, PUNE -48 Kmph, Jalgaon-54 Kmph, SOLAPUR-44 kmph
- ❖ **Marathwada:** Chh. Sambhaji Nagar -61 Kmph, Jalna-52 Kmph, Hingoli -50 Kmph, Tulgadharashiv -46 Kmph
- ❖ **Konkan:** Ratnagiri- 39 Kmph, Sindhudurg- 41 Kmph, Mumbai -35 Kmph
- ❖ **Jharkhand:** Jamtara – 57
- ❖ **Sub-Himalayan West Bengal:** Jalpaiguri-44-, Dinhata- 35
- ❖ **Arunachal Pradesh:** Shiyomi – 38

Temperature observations during past 24 hours till 0830 hours IST of today:

- ❖ Yesterday, Maximum Temperatures were in the range of **40-47°C** in most parts of Rajasthan, Haryana, Delhi, East Madhya Pradesh; at a few places over West Madhya Pradesh; in isolated parts of Uttar Pradesh, Chhattisgarh, Vidarbha, Odisha, Gujarat State; in the range **36-40°C** in few parts of Gangetic West Bengal, Jharkhand; in isolated parts of Bihar, Jammu Division, Coastal Andhra Pradesh & Yanam, Rayalaseema, Telangana and they were less than **36°C** elsewhere over remaining parts of the country. Yesterday, the highest **maximum temperature of 47.6°C** was reported at **Sri Ganganagar (West Rajasthan)** over the country.
- ❖ Yesterday, Maximum Temperature were **markedly above normal (> 5.1°C)** at few places over Jammu-Kashmir-Ladakh-Gilgit-Baltistan-Muzaffarabad; at Isolated places over West Uttar Pradesh, Himachal Pradesh, West Rajasthan, East Rajasthan and East Madhya Pradesh. **appreciably above normal (3.1°C to 5.0°C)** at Few places over Arunachal Pradesh and Punjab; at Isolated places over Assam & Meghalaya, Gangetic West Bengal, Haryana-Chandigarh-Delhi and West Madhya Pradesh. **above normal (1.6°C to 3.0°C)** at Isolated places over Odisha and Saurashtra & Kutch. **near normal (-1.5°C to 1.5°C)** at Many places over Andaman & Nicobar Islands, Sub Himalayan West Bengal & Sikkim, Jharkhand, Tamil Nadu, Puducherry & Karaikal and Lakshadweep; at Few places over Nagaland, Manipur, Mizoram & Tripura, Bihar, Uttarakhand, Gujarat Region, Konkan & Goa, Chhattisgarh and Kerala & Mahe; at Isolated places over East Uttar Pradesh, Vidarbha, Coastal Andhra Pradesh & Yanam and South Interior Karnataka. (Fig. 2).

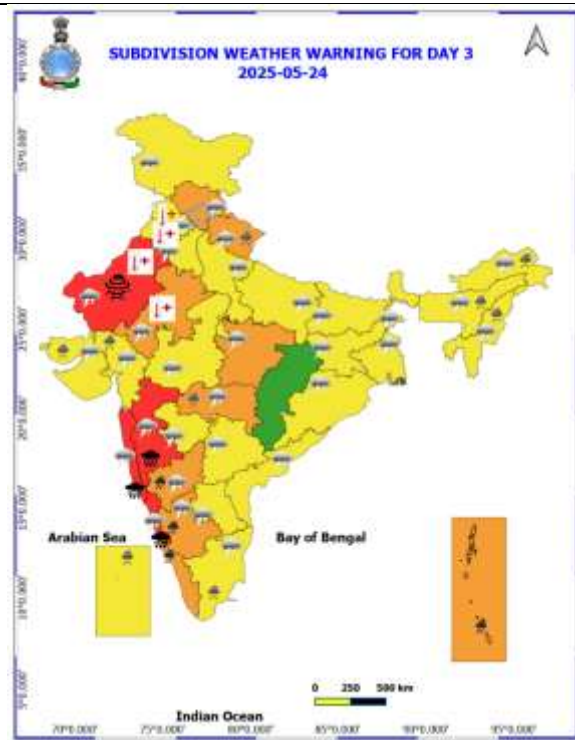
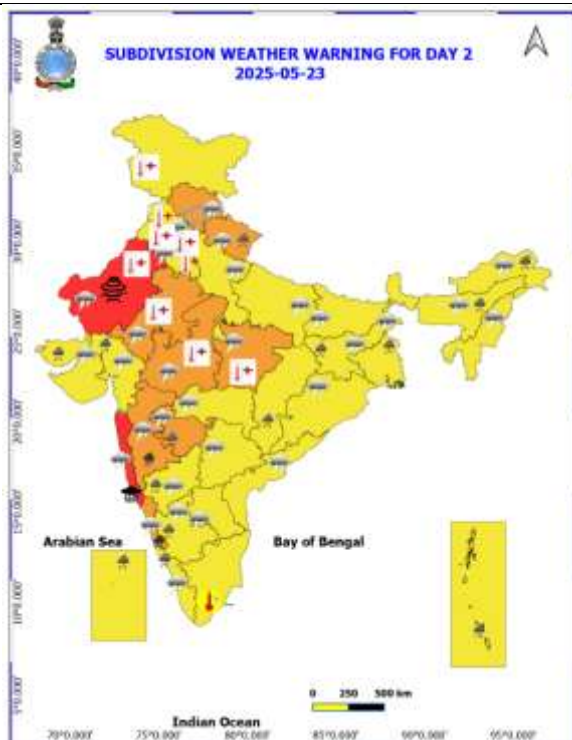
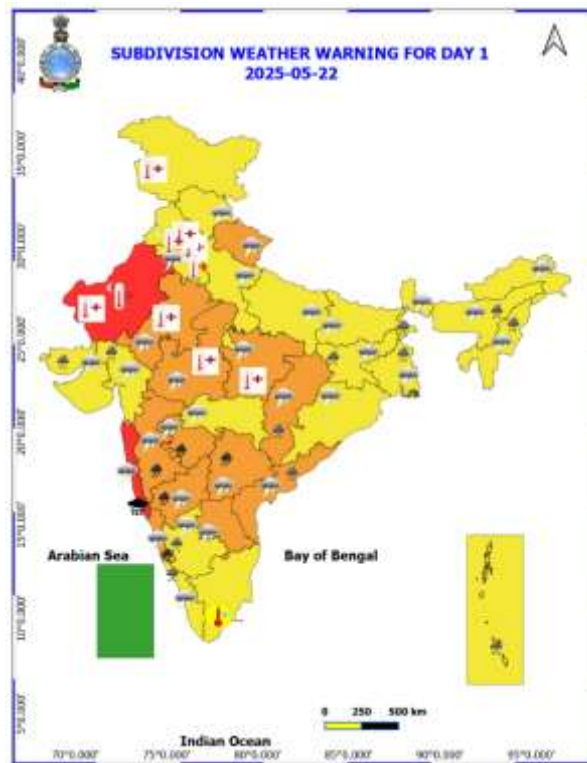
Fig. 1: Maximum Temperatures

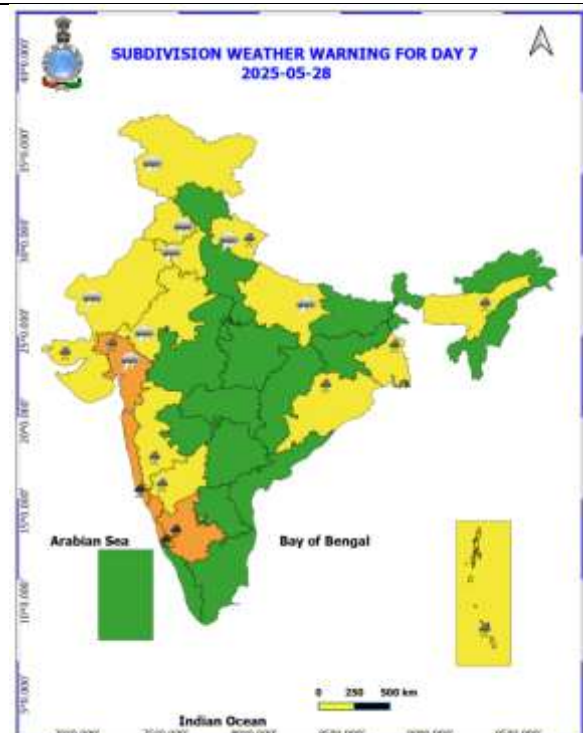
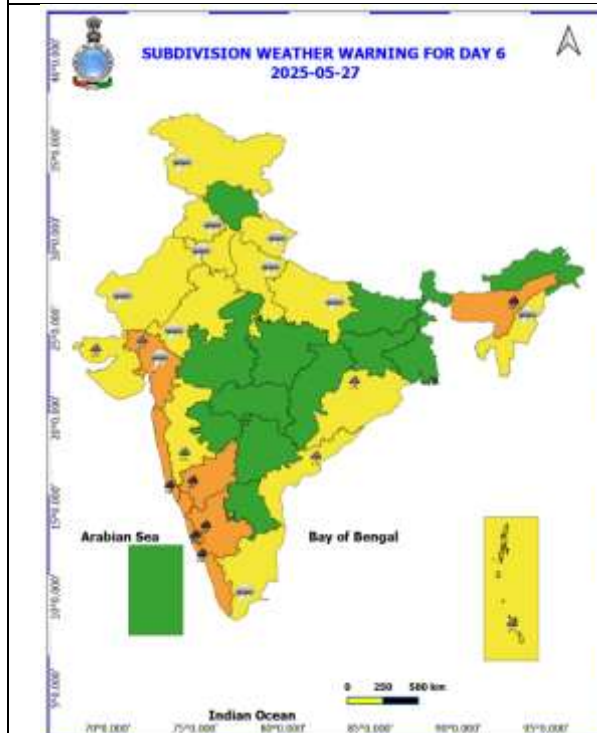
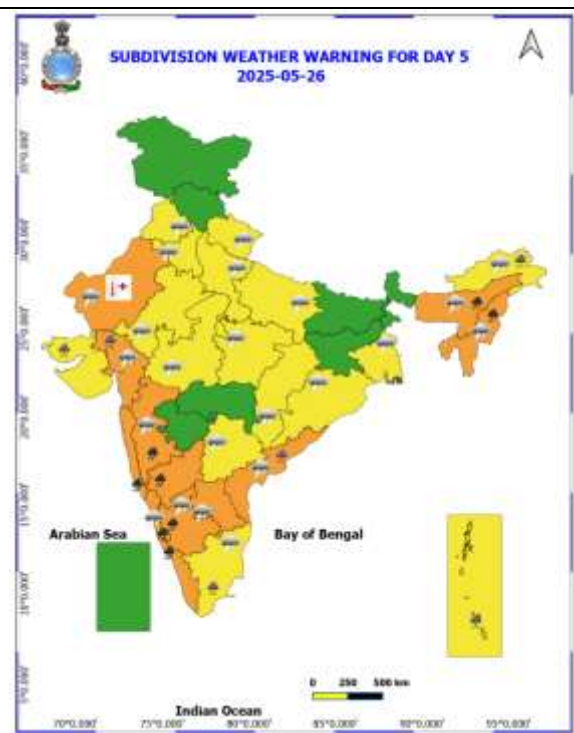
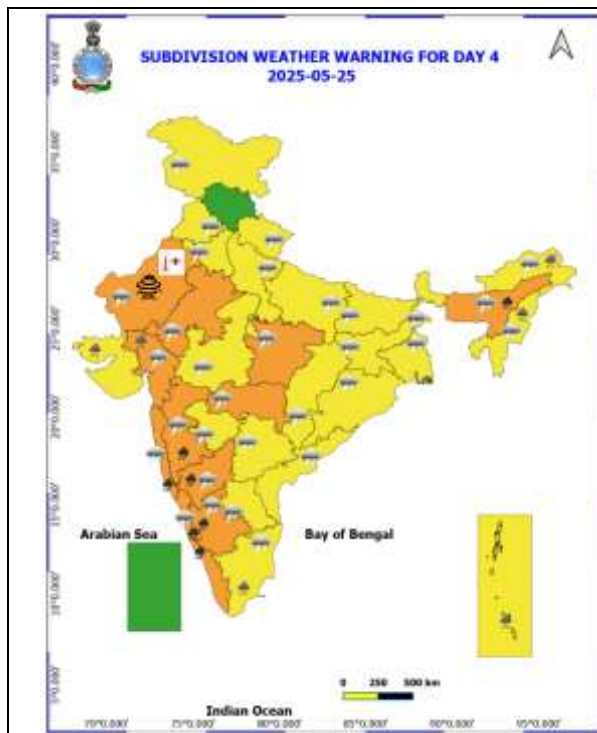
Fig. 2: Departure of Maximum Temperatures



7 Days Rainfall Forecast								
S. No.	Subdivision	22-May	23-May	24-May	25-May	26-May	27-May	28-May
		Day 1	Day 2	Day 3	Day 4	Day 5	Day 6	Day 7
1	ANDAMAN & NICOBAR ISLANDS	FWS	WS	WS	WS	WS	WS	WS
2	ARUNACHAL PRADESH	FWS	FWS	FWS	FWS	FWS	FWS	FWS
3	ASSAM & MEGHALAYA	WS	WS	FWS	FWS	WS	WS	WS
4	NAGALAND, MANIPUR, MIZORAM & TRIPURA	WS	WS	WS	WS	FWS	FWS	FWS
5	SUB-HIMALAYAN WEST BENGAL & SIKKIM	WS	FWS	FWS	FWS	FWS	SCT	SCT
6	GANGETIC WEST BENGAL	FWS	FWS	SCT	SCT	SCT	SCT	FWS
7	ODISHA	SCT	SCT	SCT	SCT	SCT	FWS	FWS
8	JHARKHAND	FWS	FWS	SCT	SCT	SCT	SCT	SCT
9	BIHAR	ISOL	SCT	SCT	ISOL	ISOL	ISOL	ISOL
10	EAST UTTAR PRADESH	SCT	SCT	FWS	FWS	SCT	SCT	FWS
11	WEST UTTAR PRADESH	SCT	SCT	SCT	SCT	SCT	SCT	SCT
12	UTTARAKHAND	SCT	FWS	FWS	FWS	FWS	FWS	FWS
13	HARYANA CHANDIGARH & DELHI	ISOL	ISOL	ISOL	ISOL	SCT	ISOL	SCT
14	PUNJAB	ISOL	ISOL	ISOL	SCT	SCT	ISOL	SCT
15	HIMACHAL PRADESH	SCT	SCT	FWS	FWS	SCT	SCT	FWS
16	JAMMU & KASHMIR AND LADAKH	ISOL	ISOL	ISOL	ISOL	ISOL	SCT	SCT
17	WEST RAJASTHAN	DRY	ISOL	ISOL	ISOL	ISOL	ISOL	ISOL
18	EAST RAJASTHAN	ISOL	ISOL	ISOL	ISOL	ISOL	ISOL	ISOL
19	WEST MADHYA PRADESH	SCT	SCT	SCT	SCT	SCT	SCT	SCT
20	EAST MADHYA PRADESH	SCT	SCT	SCT	SCT	SCT	SCT	SCT
21	GUJARAT REGION	SCT	FWS	FWS	FWS	FWS	FWS	FWS
22	SAURASHTRA & KUTCH	SCT	FWS	FWS	FWS	FWS	FWS	FWS
23	KONKAN & GOA	WS	WS	WS	WS	WS	FWS	FWS
24	MADHYA MAHARASHTRA	FWS	FWS	SCT	SCT	ISOL	ISOL	ISOL
25	MARATHAWADA	FWS	SCT	ISOL	ISOL	SCT	SCT	ISOL
26	VIDARBHA	SCT	SCT	SCT	SCT	SCT	FWS	FWS
27	CHHATTISGARH	FWS	FWS	FWS	FWS	SCT	FWS	FWS
28	COASTAL ANDHRA PRADESH & YANAM	SCT	SCT	SCT	SCT	SCT	SCT	SCT
29	TELANGANA	FWS	FWS	FWS	FWS	FWS	SCT	SCT
30	RAYALASEEMA	SCT	SCT	SCT	SCT	FWS	FWS	SCT
31	TAMILNADU PUDUCHERRY & KARAIKAL	ISOL	ISOL	SCT	SCT	SCT	ISOL	ISOL
32	COASTAL KARNATAKA	WS	WS	WS	WS	WS	WS	WS
33	NORTH INTERIOR KARNATAKA	SCT	SCT	FWS	FWS	WS	WS	WS
34	SOUTH INTERIOR KARNATAKA	SCT	SCT	FWS	WS	WS	WS	WS
35	KERALA & MAHE	FWS	WS	WS	WS	WS	WS	WS
36	LAKSHADWEEP	FWS	WS	WS	WS	WS	WS	WS

- As the lead period increases forecast accuracy decreases.



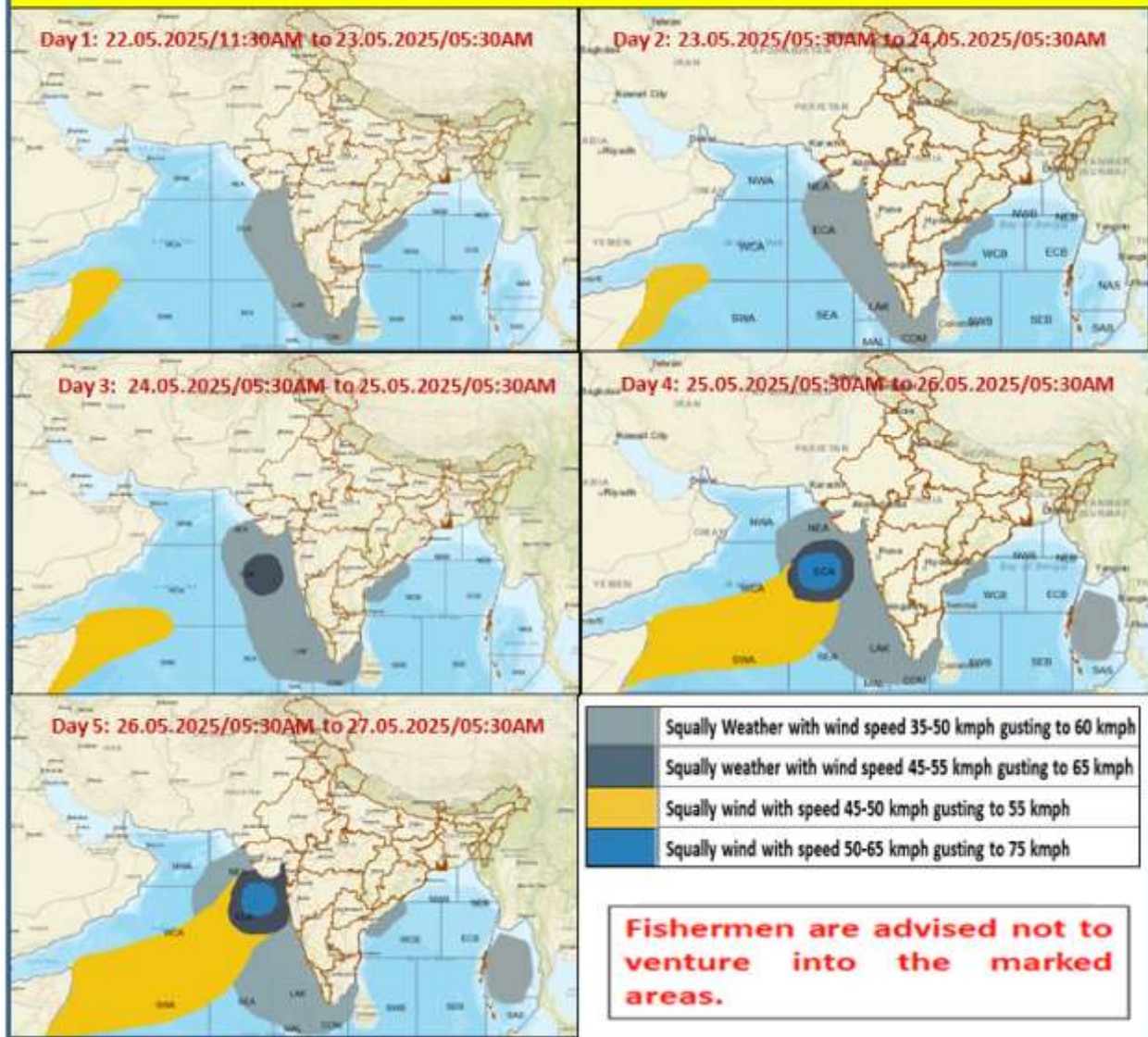


- Action may be taken based on ORANGE AND RED COLOUR warnings.
- Vulnerable regions likely urban and hilly areas action may be initiated for heavy rainfall warning.
- As the lead period increases forecast accuracy decreases.

Detailed district wise Multi Hazard weather warning for next five days available at
<https://mausam.imd.gov.in/responsive/districtWiseWarningGIS.php>



Fishermen Warning Graphics



Weather forecast over Delhi/NCR during 22th to 25th May 2025**Past Weather:**

There has been fall in minimum temperature up to 10°C and fall in maximum temperature up to 1°C over Delhi/NCR during the past 24 hours. The maximum and minimum temperatures over Delhi are in the range of 40 to 41°C and 19 to 22°C respectively. The minimum temperature was below normal up to 4 - 8°C and the maximum temperature was near normal at most places over Delhi/NCR. Partly cloudy sky conditions with predominant surface wind from the southeast/east direction with wind speeds less than 20 kmph gusting to 79 kmph prevailed during the past 24 hours. Light to moderate rainfall has been recorded in many parts of Delhi. Partly cloudy sky conditions with wind speed less than 20 kmph gusting to 40 kmph from the southeast direction prevailed over the region in the forenoon today.

Weather Forecast:

22.05.2025: Partly cloudy sky. Thundery development with surface wind (speed 30 – 40 kmph) towards evening/night. The maximum temperatures over Delhi are likely to be in the range of 36 to 38°C. The maximum temperature will be below normal up to 2 - 4°C. The predominant surface wind will likely be from the southeast direction with a wind speed of less than 20 kmph till evening. It would decrease becoming less than 15 kmph from the southeast direction during the night.

23.05.2025: Partly cloudy sky. Very light rain to light rain accompanied with thunderstorm/lightning and gusty winds (speed 30 – 40 kmph) temporarily reaching to 50 kmph during thunderstorm with dust rising surface winds towards evening/night. The maximum and minimum temperatures over Delhi are likely to be in the range of 37 to 39°C and 24 to 26°C respectively. The minimum temperature will be near normal and the maximum temperature will be below normal up to 1 - 3°C. The predominant surface wind will likely be from the northeast direction with a wind speed of 10-15 kmph during morning hours. The wind speed will gradually increase becoming 16-20 kmph from the northwest direction in the afternoon. It will increase becoming less than 25 kmph from the southeast direction during evening and night.

24.05.2025: Partly cloudy sky. Very light rain to light rain accompanied with thunderstorm/lightning and gusty winds (speed 30 – 40 kmph) temporarily reaching to 50 kmph during thunderstorm with dust rising surface winds. The maximum and minimum temperatures over Delhi are likely to be in the range of 37 to 39°C and 27 to 29°C respectively. The minimum temperature will be above normal up to 1 - 2°C and the maximum temperature will be below normal up to 2 - 4°C. The predominant surface wind will likely be from the southeast direction with a wind speed of less than 20 kmph during the morning hours. The wind speed will gradually decrease becoming 10-15 kmph from the southeast direction in the afternoon. It will increase becoming less than 25 kmph from the southeast direction during evening and night.

25.05.2025: Partly cloudy sky. Possibility of thundery development with dust raising surface wind (speed 30 – 40 kmph). The maximum and minimum temperatures over Delhi are likely to be in the range of 38 to 40°C and 26 to 28°C respectively. The minimum temperature will be above normal up to 1 - 2°C, and the maximum temperature will be below normal up to 1 - 3°C. The predominant surface wind will likely be from the southeast direction with a wind speed of less than 20 kmph during the morning hours. The wind speed will gradually decrease becoming 10-15 kmph from the southeast direction in the afternoon. It will increase becoming less than 20 kmph from the east direction during evening and night.

Impact expected and Action Suggested due to thunderstorm with lightning/gusty winds:

- Be cautious and take precautionary measures, though there is the likelihood of thunderstorm/lightning and gusty winds (speed 30 – 40 kmph) temporarily reaching to 50 kmph during thunderstorm with dust rising surface winds.
- Breaking of tree branches, uprooting of large avenue trees, Large dead limbs blown from trees, Damage to standing crops, Minor to major damage to power and communication lines due to breaking of branches, Partial damage to vulnerable structures due to strong winds, Loose objects may fly.
- People are advised to keep a watch on the weather for worsening conditions and be ready to move to safer places accordingly, stay indoors, close windows & doors and avoid travel if possible, take safe shelters; do not take shelter under trees, do not lie on concrete floors and do not lean against concrete walls, unplug electrical/ electronic appliances, immediately get out of water bodies, keep away from all the objects that conduct electricity.

Impact & Action Suggested due to Extremely and heavy to very heavy rainfall over (For Red & Orange colour warning areas of Peninsular India & Maharashtra)

- ✓ **Extremely heavy rainfall** at isolated places over Konkan & Goa during 22nd-24th; Coastal Karnataka, Madhya Maharashtra on 24th May.
- ✓ **Isolated very heavy rainfall** over Kerala, Karnataka, Konkan & Goa during 22nd-28th; Madhya Maharashtra during 22nd-26th; Marathawada, Telangana, Tamilnadu Puducherry & Karaikal on 22nd May.

Impact Expected

- ❖ Localized Flooding of roads, water logging in low lying areas and closure of underpasses mainly in urban areas of the above region.
- ❖ Occasional reduction in visibility due to heavy rainfall.
- ❖ Disruption of traffic in major cities due to water logging in roads leading to increased travel time.
- ❖ Minor damage to kutcha roads.
- ❖ Possibilities of damage to vulnerable structure.
- ❖ Localized Landslides/Mudslides
- ❖ Damage to horticulture and standing crops in some areas due to inundation.
- ❖ It may lead to riverine flooding in some river catchments (for riverine flooding please visit Web page of CWC).

Action Suggested

- ❖ Check for traffic congestion on your route before leaving for your destination.
- ❖ Follow any traffic advisories that are issued in this regard.
- ❖ Avoid going to areas that face the water logging problems often.
- ❖ Avoid staying in vulnerable structure.

Impact expected and action suggested due to isolated thunderstorm with lightning/gusty & Squally winds & Hailstorm over

- ✓ **Thundersquall wind speed reaching 50-60 kmph gusting to 70 kmph** likely over Uttarakhand during 22nd-24th, West Rajasthan, Himachal Pradesh on 23rd & 24th; East Rajasthan on 25th & 26th May. East Madhya Pradesh during 22nd-25th; West Madhya Pradesh, Jharkhand, Chhattisgarh, Konkan & Goa, Madhya Maharashtra, Marathawada on 22nd & 23rd; Gangetic West Bengal, Coastal Andhra Pradesh & Yanam, Rayalaseema on 22nd and over Gujarat state during 25th-28th May.
- ✓ **Isolated hailstorm** over Himachal Pradesh on 23rd & 24th May.

Impact expected:

- Breaking of tree branches, uprooting of large avenue trees. Large dead limbs blown from trees. Damage to Standing crops.
- Minor to Major damage to banana and papaya trees.
- Minor to major damage to power and communication lines due to breaking of branches.
- Strong wind/hail may damage plantation, horticulture and standing crops.
- Hail may injure people and cattle at open places.
- Partial damage to vulnerable structures due to strong winds.
- Minor damage to kutcha houses/walls and huts.
- Loose objects may fly.

Action suggested:

- People are advised to keep a watch on the weather for worsening conditions and be ready to move to safer places accordingly.
- Stay indoors, close windows & doors and avoid travel if possible.
- Take safe shelters; do not take shelter under trees.
- Do not lie on concrete floors and do not lean against concrete walls.
- Unplug electrical/ electronic appliances.
- Immediately get out of water bodies.
- Keep away from all the objects that conduct electricity.

Impact expected and action suggested due to Heat wave to severe heat wave conditions in isolated pockets of West Rajasthan during 22nd-24th May.

Heat wave conditions very likely in isolated pockets of Jammu, Punjab, Haryana Chandigarh, north Madhya Pradesh on 22nd & 23rd; East Rajasthan during 22nd-24th and West Rajasthan on 25th & 26th May.

Red alert Areas

➤ Very high likelihood of developing heat illness and heat stroke in all ages. ➤ Extreme care needed for vulnerable people.

Orange alert Areas

- High temperature & increased likelihood of heat illness symptoms in people who are either exposed to sun for a prolonged period or doing heavy work.
- High health concern for vulnerable people e.g. infants, elderly, people with chronic diseases.
- Avoid heat exposure– keep cool. Avoid dehydration.
- Drink sufficient water- even if not thirsty.
- Use ORS, homemade drinks like lassi, torani (rice water), lemon water, buttermilk, etc. to keep yourself hydrated.

Yellow alert Areas

- Moderate temperature & heat is tolerable for general public but moderate health concern likely for vulnerable people e.g. infants, elderly, people with chronic diseases.
- Avoid heat exposure.
- Wear lightweight, light colour, loose, cotton clothes.
- Cover your head, use a cloth, hat or umbrella.

Agromet advisories for likely impact of Heavy Rainfall / Hailstorms / Gusty Winds / Heat Wave

- In **Assam & Meghalaya, Nagaland, Manipur, Mizoram & Tripura, West Bengal & Sikkim, Jharkhand, Bihar, Chhattisgarh, Konkan & Goa, Madhya Maharashtra, Marathwada, Gujrat, Tamil Nadu, Kerala, Karnataka, Andhra Pradesh and Telangana**, drain out excess water and ensure proper drainage in fields with standing crops and vegetables.
- In **Uttarakhand and East Uttar Pradesh**, use hail nets and hail caps to prevent mechanical damage in vegetables and orchards due to the possibility of hailstorms.
- Shift the harvested produce in safer places or cover the produce with tarpaulin sheets in the fields. Tie the harvested crops properly and cover them to minimise the risk of displacement due to strong surface winds.
- Provide mechanical support to horticultural crops and staking to vegetables to avoid lodging.
- In **Jammu & Kashmir, Punjab, Haryana, South Uttar Pradesh, Rajasthan and North Madhya Pradesh**, apply light and frequent irrigation in the evening to protect standing crops, vegetables and orchards from the adverse effects of heat waves and high temperatures.

Livestock / Poultry / Fishery

- Keep the animals inside the shed during heavy rainfall / hailstorm and provide them balanced feed.
- Store feed and fodder in a safe place to prevent spoilage.
- Construct an outlet with proper netting around the ponds to drain out excess water, thereby preventing fish from escaping in case of overflow.
- To reduce the effect of heat wave/high temperature, cover the roof of poultry sheds with grass. Also, provide clean, hygienic and plenty of drinking water to animals.

Flash Flood Guidance:

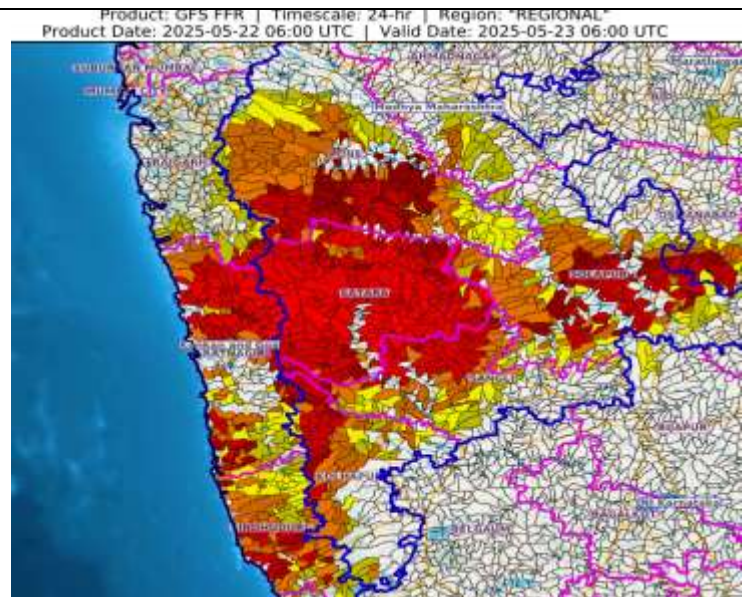
24 hours Outlook for the Flash Flood Risk (FFR) till 1130 IST of 23-05-2025 :

Low to Moderate flash flood risk likely over few watersheds & neighbourhoods of following Met Sub-divisions during next 24 hours.

Konkan & Goa - Ratnagiri and Sindhudurg districts.

Madhya Maharashtra - Kolhapur, Pune, Sangli, Satara and Solapur districts.

Surface runoff/ Inundation may occur at some fully saturated soils & low-lying areas over Area of Concern (AoC) as shown in map due to expected rainfall occurrence in next 24 hours.



Legends & abbreviations:

- ❖ **Heavy Rain:**64.5-115.5mm; **Very Heavy Rain:**115.6-204.4mm; **Extremely Heavy Rain:** >204.4mm.
- ❖ **Obsy:** Observatory; **AWS:** Automatic Weather Station; **ARG:** Automatic Rain Gauge; **dist:** District; **NH:** National Highway; **KVK:** Krishi Vigyan Kendra; **DVC:** Damodar Valley Corporation; **PTO:** Part Time Office, **Aero:** Aerodrome, **IAF:** Indian Air Force.
- ❖ **Region wise classification of meteorological Sub-Divisions:**
 - **Northwest India:** Western Himalayan Region (Jammu-Kashmir-Ladakh-Gilgit-Baltistan-Muzaffarabad, Himachal Pradesh and Uttarakhand); Punjab, Haryana-Chandigarh-Delhi; West Uttar Pradesh, East Uttar Pradesh, West Rajasthan and East Rajasthan.
 - **Central India:** West Madhya Pradesh, East Madhya Pradesh, Vidarbha and Chhattisgarh.
 - **East India:** Bihar, Jharkhand, Sub-Himalayan West Bengal & Sikkim; Gangetic West Bengal, Odisha and Andaman & Nicobar Islands.
 - **Northeast India:** Arunachal Pradesh, Assam & Meghalaya and Nagaland, Manipur, Mizoram & Tripura.
 - **West India:** Gujarat Region, Saurashtra & Kutch, Konkan & Goa, Madhya Maharashtra and Marathawada.
 - **South India:** Coastal Andhra Pradesh & Yanam, Telangana, Rayalaseema, Coastal Karnataka, North Interior Karnataka, South Interior Karnataka, Kerala & Mahe, Tamil Nadu, Puducherry & Karaikal and Lakshadweep.

LEGENDS

1. अंडमान और निकोबार द्वीपसमूह

2. अरुणाचल प्रदेश

3. असम और मेघालय

4. नागालैंड, मणिपुर, मिजोरम और त्रिपुरा

5. उप-हिमालयी पश्चिम बंगाल और सिक्किम

6. गंगीय पश्चिम बंगाल

7. ओडिशा

8. झारखंड

9. बिहार

10. पूर्वी उत्तर प्रदेश

11. पश्चिम उत्तर प्रदेश

12. उत्तराखंड

13. हरियाणा, चंडीगढ़ और दिल्ली

14. पंजाब

15. हिमाचल प्रदेश

16. जम्मू और कश्मीर और लद्दाख

17. पश्चिम राजस्थान

18. पूर्वी राजस्थान

19. पश्चिम मध्य प्रदेश

20. पूर्वी मध्य प्रदेश

21. गुजरात

22. सौराष्ट्र

23. कोंकण और गोवा

24. मध्य महाराष्ट्र

25. मराठवाड़ा

26. विदर्भ

27. छत्तीसगढ़

28. तटीय आंध्र प्रदेश और यनम

29. तेलंगाना

30. रायलसीमा

31. तमिलनाडु, पुडुचेरी और कराईकल

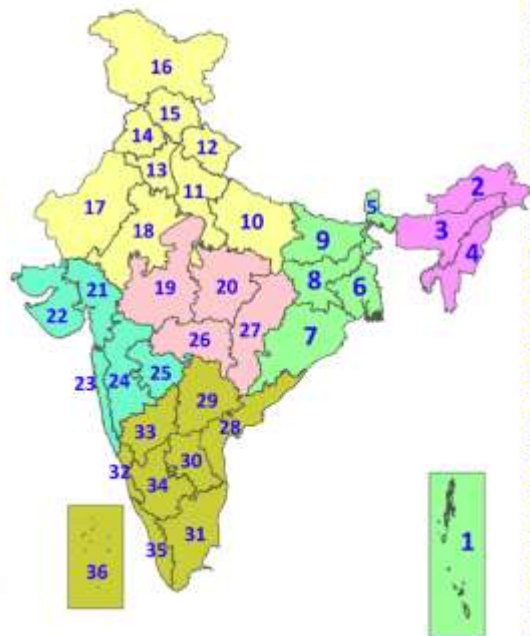
32. तटीय कर्नाटक

33. आंतरिक उत्तरी कर्नाटक

34. आंतरिक दक्षिणी कर्नाटक

35. केरल और माहे

36. लक्षद्वीप



1. Andaman & Nicobar Islands

2. Arunachal Pradesh

3. Assam & Meghalaya

4. Nagaland, Manipur, Mizoram & Tripura

5. Sub-Himalayan West Bengal & Sikkim

6. Gangetic West Bengal

7. Odisha

8. Jharkhand

9. Bihar

10. East Uttar Pradesh

11. West Uttar Pradesh

12. Uttarakhand

13. Haryana, Chandigarh & Delhi

14. Punjab

15. Himachal Pradesh

16. Jammu & Kashmir and Ladakh

17. West Rajasthan

18. East Rajasthan

19. West Madhya Pradesh

20. East Madhya Pradesh

21. Gujarat

22. Saurashtra

23. Konkan & Goa

24. Madhya Maharashtra

25. Marathwada

26. Vidarbha

27. Chhattisgarh

28. Coastal Andhra Pradesh & Yanam

29. Telangana

30. Rayalaseema

31. Tamilnadu, Puducherry & Karaikal

32. Coastal Karnataka

33. North Interior Karnataka

34. South Interior Karnataka

35. Kerala & Mahe

36. Lakshadweep

SPATIAL DISTRIBUTION (% of Stations reporting)

% Stations	Category	% Stations	Category
76-100	Widespread (WS/Most Places)	26-50	Scattered (SCT/A Few Places)
51-75	Fairly Widespread (FWS/Many Places)	1-25	Isolated (ISOL)



Fog



Heavy Snow



Cold Wave



Heavy Rain



Dust Storm



Cold Day



Very Heavy Rain



Heat Wave



Ground Frost



Extremely Heavy Rain



Warm Night



Thunder & Lightning



Hot Day



Hailstorm



Hot & Humid



Dust Raising Winds



Strong Surface Winds

COLOUR CODED WARNING

No Warning (No Action)

Watch (Be Aware)

Alert (Be Prepared To Take Action)

Warning (Take Action)

Probabilistic Forecast

Terms	Probability of Occurrence (%)
Unlikely	< 25
Likely	25 - 50
Very Likely	50 - 75
Most Likely	> 75

* Red colour warning does not mean "Red Alert", Red colour warning means "Take Action".

Forecast and Warning for any day is valid from 0830 hours IST of day till 0830 hours IST of next day.

For more details, kindly visit <https://mausam.imd.gov.in> or contact: 011-2434-4599

(Service to the Nation since 1875)

DEFINITION/CRITERIA

Rain/ Snow *

Heavy: 64.5 to 115.5 mm/cm *
Very Heavy: 115.6 to 204.4 mm/cm *
Extremely Heavy: > 204.4 mm/cm *

Heat Wave

When maximum temperature of a station reaches $\geq 40^{\circ}\text{C}$ for plains and $\geq 30^{\circ}\text{C}$ for hilly regions

(a) Based on Departure from normal

Heat Wave: Maximum Temperature Departure from normal 4.5°C to 6.4°C .

Severe Heat Wave: Maximum Temperature Departure from normal $\geq 6.5^{\circ}\text{C}$

(b). Based on Actual maximum temperature

Heat Wave: When actual maximum temperature $\geq 45^{\circ}\text{C}$.

Severe Heat Wave: When actual maximum temperature $\geq 47^{\circ}\text{C}$.

(c). Criteria for heat wave for coastal stations

When maximum temperature departure is $> 4.5^{\circ}\text{C}$ from normal. Heat Wave may be described provided maximum temperature $\geq 37^{\circ}\text{C}$.

Warm Night

When maximum temperature remains 40°C

Warm Night: When minimum temperature departure 4.5°C to 6.4°C .

Severe Warm Night: When minimum temperature departure $> 6.4^{\circ}\text{C}$.

Cold Wave

When minimum temperature of a station $\leq 10^{\circ}\text{C}$ for plains and $\leq 0^{\circ}\text{C}$ for hilly regions.

(a). Based on departure

Cold Wave: Minimum Temperature Departure from normal -4.5°C to -6.4°C .

Severe Cold Wave: Minimum Temperature Departure from normal $\leq -6.5^{\circ}\text{C}$

(b) Based on actual Minimum Temperature (for Plains only)

Cold Wave: When Minimum Temperature is $\leq 4.0^{\circ}\text{C}$

Severe Cold Wave: When Minimum Temperature is $\leq 2.0^{\circ}\text{C}$

(c) For Coastal Stations

When Minimum Temperature departure is $\leq -4.5^{\circ}\text{C}$ & actual Minimum Temperature is $\leq 15^{\circ}\text{C}$

Cold Day

When minimum temperature of a station $\leq 10^{\circ}\text{C}$ for plains and $\leq 0^{\circ}\text{C}$ for hilly regions

Based on departure

Cold Day: Maximum Temperature Departure from normal -4.5°C to -6.4°C .

Severe Cold Day: Maximum Temperature Departure from normal $\leq -6.5^{\circ}\text{C}$

Fog

Phenomenon of small droplets suspended in air and the horizontal visibility $< 1\text{km}$

Moderate Fog: When the visibility between 500-200 metres

Dense Fog: when the visibility between 50- 200 metres

Very Dense Fog: when the visibility < 50 metres

Thunderstorm

Sudden electrical discharges manifested by a flash of light (Lightning) and a sharp rumbling sound (thunder)

Dust/Sand Storm

An ensemble of particles of dust or sand energetically lifted to great heights by a strong and turbulent wind.

Frost

Ice deposits on ground

Air temperature $\leq 4^{\circ}\text{C}$ (over Plains)

Squall

A strong wind that rises suddenly, lasts for atleast 1 minute.

Moderate: Wind speed 52-61 kmph

Severe: Wind speed 62-67 kmph

Very Severe: Wind speed > 67 kmph

Sea State

Effect of various waves in the sea over specific area

Rough to very rough: Wind speed 41-62 kmph (22-33 knots) & Wave height 2.5-6 metre

High to very high: Wind speed 63-117 kmph (34-63 knots) & Wave height 6-14 metre

Phenomenal: Wind speed > 117 kmph (> 63 knots) & Wave height > 14 metre

Cyclone

Cyclonic Storm: Wind speed 62-87 kmph (34-47 knots)

Severe Cyclonic Storm: Wind speed 88-117 kmph (48-63 knots)

Very Severe Cyclonic Storm: Wind speed 118-165 kmph (64 - 89 knots)

Extremely Severe Cyclonic Storm: Wind speed 166-220 kmph (90 -119 knots)

Super Cyclone Storm: Wind speed > 220 kmph (> 119 knots)

* Red colour warning does not mean "Red Alert", Red colour warning means "Take Action".

Forecast and Warning for any day is valid from 0830 hours IST of day till 0830 hours IST of next day.

For more details, kindly visit <https://mausam.imd.gov.in> or contact: 011-2434-4599

(Service to the Nation since 1875)

Hot and Humid: When maximum temperatures remain 3°C above normal along with the above normal relative humidity.